



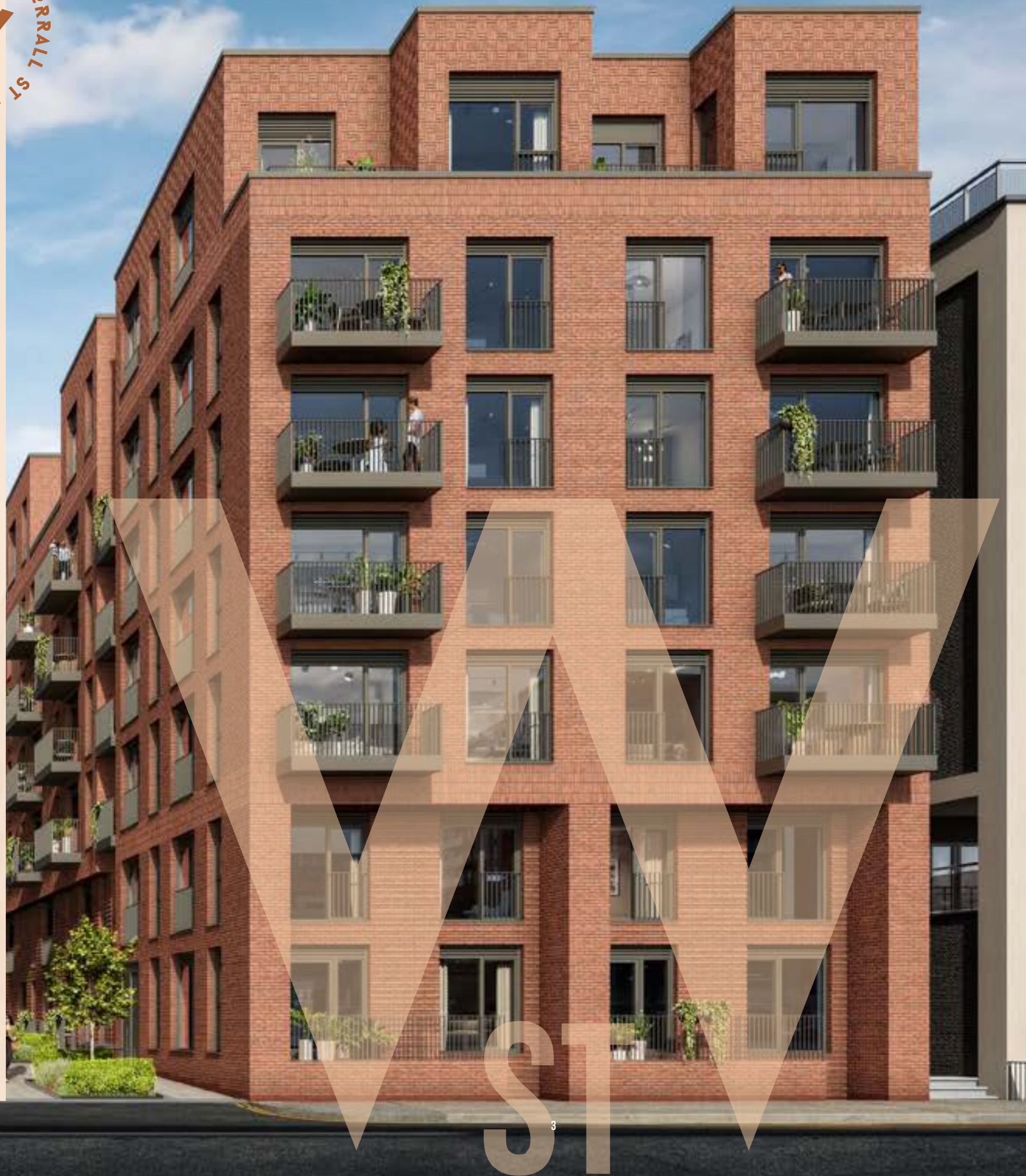
**WELCOME
TO WORRALL
STREET**





FIND YOUR PAGE

Welcome to Worrall Street	4
How to find us	8
Floor locator	10
Specification	12
What's nearby?	16
Interior design with Lynsey Ford	20
What is Rent to Buy?	24
In safe hands	26
Get in touch	28



WELCOME TO WORRALL STREET

Love where you live with Rent to Buy at Worrall Street. A vibrant building just waiting to be found, a range of beautiful homes to discover and a remarkable city to explore.

Discover a welcoming location where you can rest, think, work and have fun, whilst accessing everything that the unique location of Salford has to offer.

Buy when you're ready at Worrall Street. Rent to Buy is the supported route to home ownership and your step-by-step way to owning your apartment.



GET READY TO DISCOVER YOUR PERFECT NEW HOME

We're excited! Are you?



STEP **INSIDE**

We're looking forward to welcoming you to your new home.

You can find our show apartments just off Worrall Street.

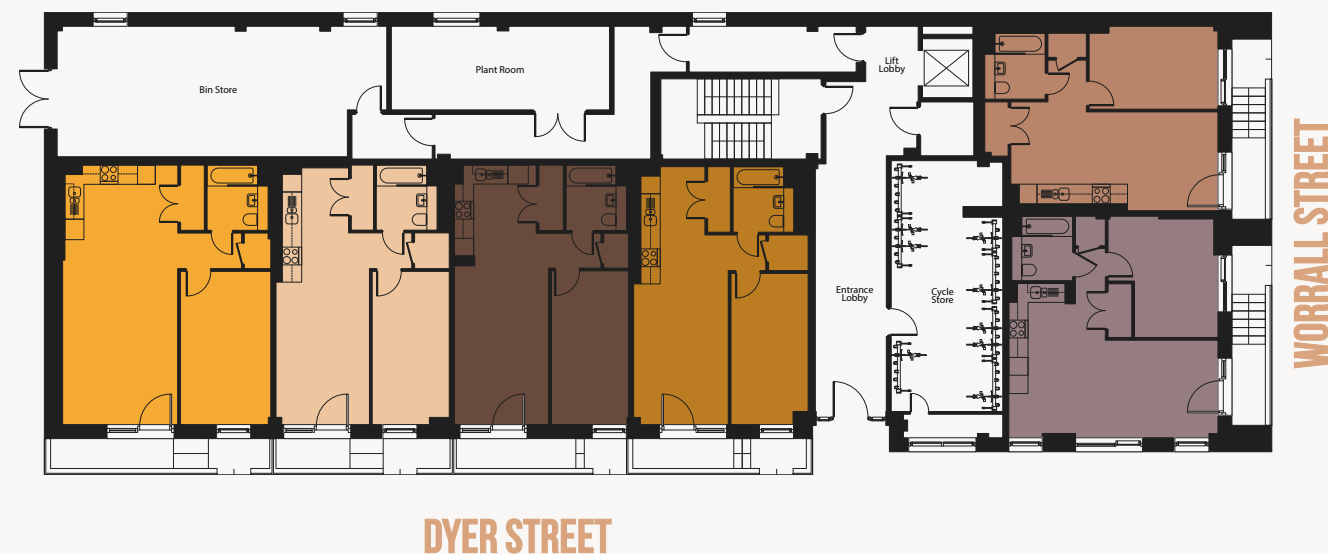
Worrall Street is a mixed tenure development offering homes for both Rent to Buy and Shared Ownership sale.



FLOOR LOCATOR

Step inside Worrall Street and you'll find an entrance lobby with handy cycle storage. Discover a range of 1 and 2 bedroom apartments that you'll be proud to call home. You'll be spoiled for choice, with 22 different apartment styles to choose from. Please speak to a lettings advisor for detailed information about each apartment type.

GROUND FLOOR



Layouts will vary by floor, drawings are indicative only. Additional floorplate layouts are available upon request.

FIRST FLOOR



SECOND - FIFTH FLOOR



SIXTH FLOOR



IT'S ALL IN THE DETAIL

We've carefully
considered what matters
to you in your new home.

INTERNAL FEATURES

- Brilliant white finish to walls
- Brushed steel ironmongery to doors
- Vinyl flooring throughout with carpets to bedrooms
- TV sockets to bedrooms and lounge
- White satin finish to woodwork
- Wall mounted panel radiators
- Hot water storage cylinder
- Blinds

KITCHEN

- Contemporary fitted kitchen units with soft-close hinges
- Slimline laminate worktops with upstands
- Glass splashback to hob area
- Electric oven, hob and extractor hood in stainless steel finish
- Integrated fridge freezer
- Chrome sockets with USB and chrome switches
- Under pelmet lighting
- LED downlights

BATHROOM

- Contemporary white bathroom fittings
- Concealed cistern WC
- Large wall mirror
- Thermostatic shower over bath with glass shower screen
- Porcelanosa wall tiles to bathrooms
- Chrome heated towel rails to bathrooms
- LED downlights

GENERAL

- Secure entry system
- Balconies to selected plots
- Cycle storage
- ICW new homes warranty
- Washing machine

Disclaimer The details in this brochure are subject to change and do not constitute part of a contract. Prospective customers must satisfy themselves by inspection or otherwise as to the accuracy of information given in this brochure. Images are provided for illustration purposes only and may differ to the homes available; please ask a lettings advisor for more information.

A modern, multi-story brick apartment building with a courtyard. The building features large windows, balconies with black railings, and some balconies with plants. The courtyard has a paved walkway, small trees, and low-lying plants. Several people are walking and jogging in the courtyard. The sky is blue with some clouds.

CONVENIENTLY LOCATED
RIGHT WHERE YOU WANT TO BE

WHAT'S NEARBY?

Sitting right on the edge of Manchester City Centre, and near the heart of Salford Quays, your days are easy to fill enjoying your surroundings. If you're looking to explore a little further afield, you're perfectly placed to do so with Cornbrook tram stop just a short walk away where you can start your journey.

BY TRAM

Manchester City Centre - 13 mins
East Didsbury - 17 mins
Media City - 19 mins
Altrincham - 20 mins
Etihad Campus - 21 mins
Eccles - 22 mins
Manchester Airport - 44 mins

ON FOOT

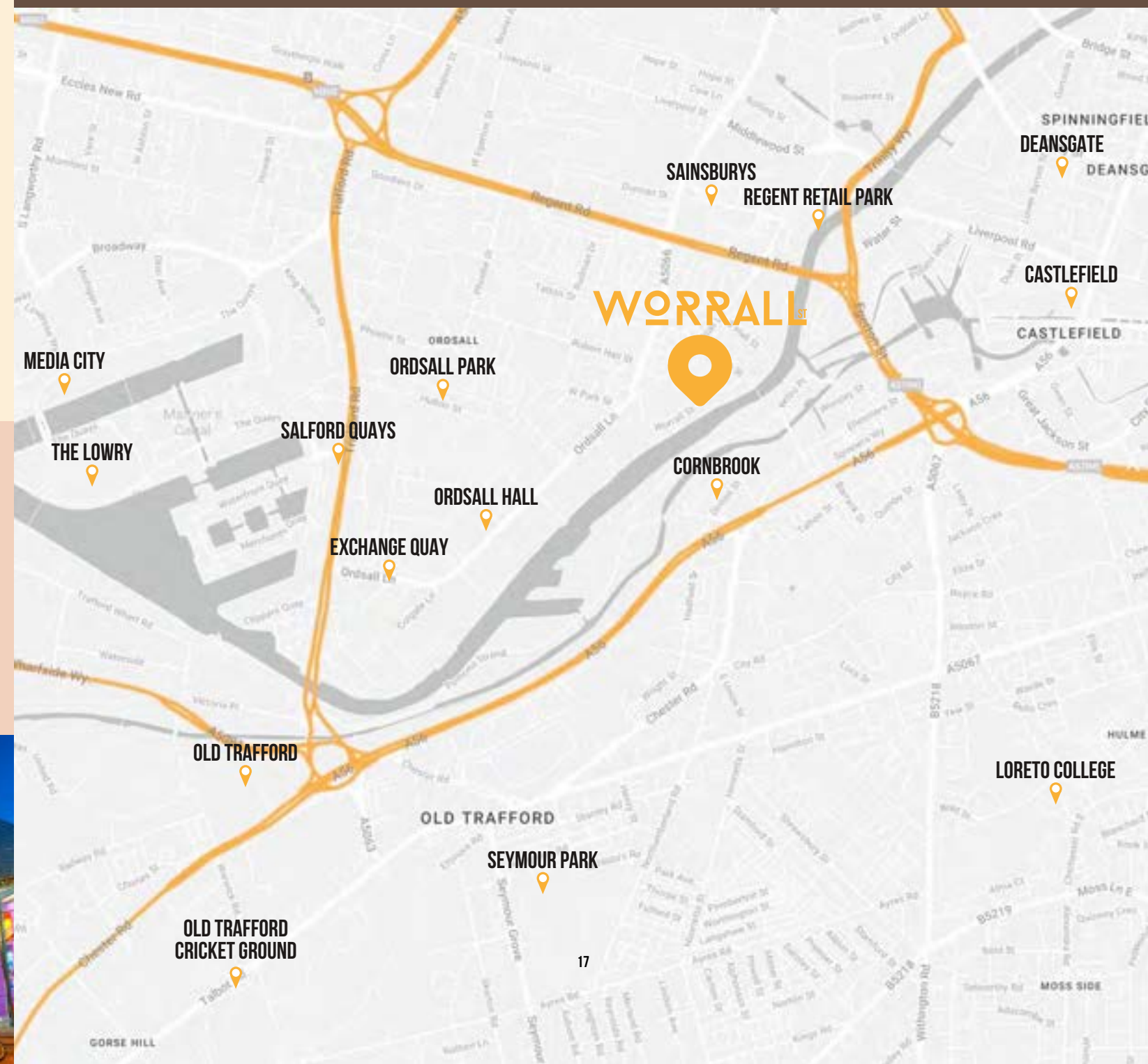
Sainsburys - 9 mins
Regent Retail Park - 11 mins
Cornbrook tram stop - 15 mins
Castlefield - 21 mins
Deansgate - 28 mins
Salford Quays - 30 mins
Market Street - 36 mins



16



EXPLORE YOUR AREA
FIND HIDDEN GEMS
LOVE WHERE YOU LIVE



WERRALL ST

17



DISCOVER A PLACE WHERE YOU BELONG.

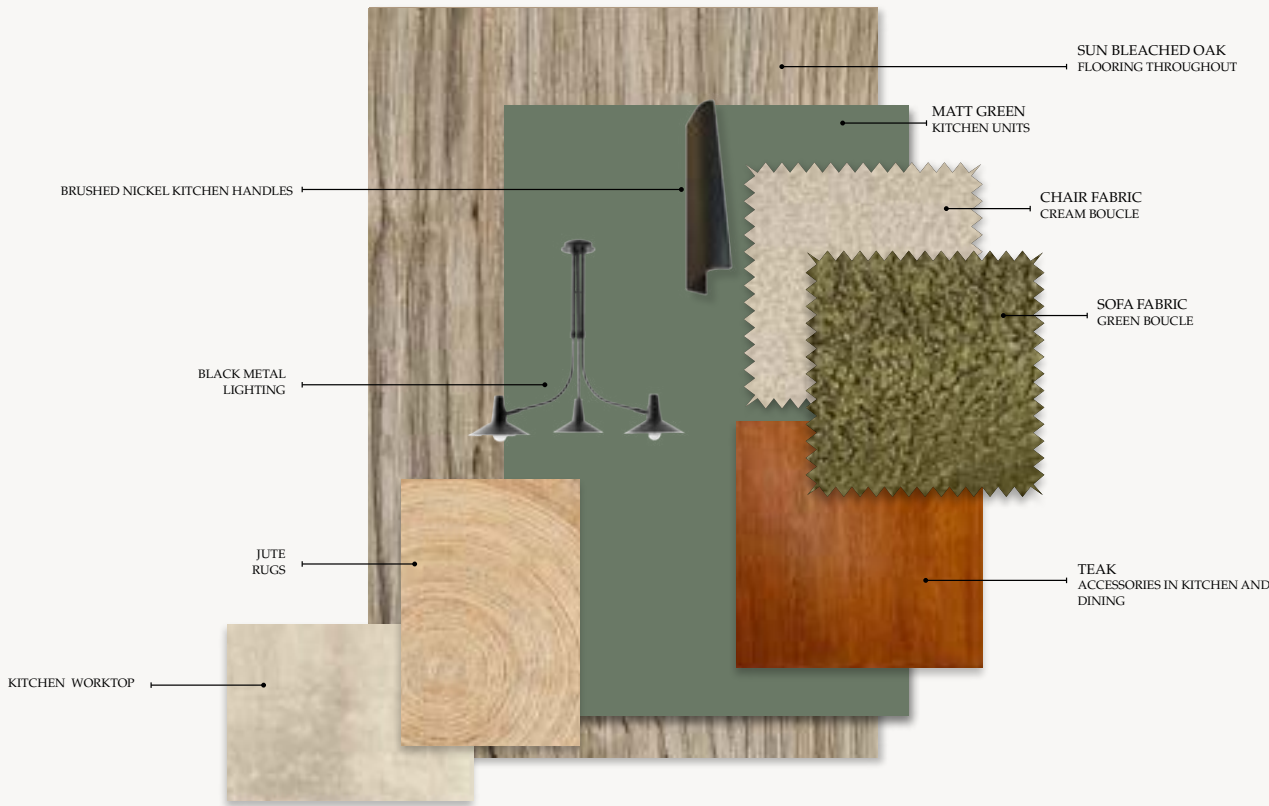
DESIGNED BY THE WINNER OF INTERIOR DESIGN MASTERS

LYNSEY FORD

We’ve teamed up with former BBC Interior Design Masters winner, Lynsey Ford, who is designing the show apartments at Worrall Street.

Since winning series 2 of Interior Design Masters, Lynsey has created her own interior design agency, creating some incredible spaces.

With a background in architecture, Lynsey and her team know better than anyone that the quality of build and design is fundamental and influences how the interior space can then be dressed.



Lynsey said: “I know first-hand the quality of the Plumlife product so going into partnership with them is a brilliant opportunity. Worrall Street has everything you could want in a home and the prospect of being able to create some amazing living spaces, which we hope will inspire others to create their own, is really exciting.”

“AT THE HEART OF OUR APPROACH WILL BE A FOCUS ON DEMONSTRATING THAT BEAUTIFUL DESIGN CAN ALSO BE AFFORDABLE.”

“THIS EXCITING PROJECT GIVES ME THE OPPORTUNITY TO DO SOMETHING PURPOSEFUL AND DIFFERENT.”

“Creating design with purpose that responds to the unique nature of every space is important to me and this exciting project gives me the opportunity to do something purposeful and different.

At the heart of our approach will be a focus on demonstrating that beautiful design can also be affordable. Me and my team are looking forward to showing off how these homes could offer inspiring living spaces on a smaller budget.

We can’t wait for it to take shape and to start welcoming residents into these fantastic new homes.”

Plumlife Homes is thrilled to be working alongside Lynsey, creating incredible spaces which customers can call home.



A photograph of two young women in a modern, brightly lit interior. The woman on the left has blonde hair and is wearing a black and white striped t-shirt; she has her eyes closed and a joyful expression. The woman on the right has dark hair and is wearing a pink t-shirt; she is smiling and hugging the first woman from behind. In the background, there is a wooden shelf with several potted plants, glass bottles, and a small green dinosaur figurine. The overall atmosphere is warm and inviting.

FIND YOUR PLACE

Whatever stage of life you're at, you'll find something just for you at Worrall Street, with a range of homes and buying schemes available.

WHAT IS RENT TO BUY?

THE RENT TO BUY SCHEME IS MADE SO YOU CAN 'TRY BEFORE YOU BUY', SUPPORTING YOU WHILE YOU FIND YOUR WAY TO OWN.

If you're not quite ready to buy a home and need a little help to save a deposit, the Rent to Buy scheme could be the perfect solution for you.

You'll rent at a discounted market rate giving you the chance to save for a deposit to buy your apartment in the future.

But there's no rush, and you don't have to make the decision next week.

At Worrall Street, you won't even need to make it next year. The whole point is easing you into the process one step at a time.

If you're in a position to buy a share in your home now, Shared Ownership is also available at Worrall Street. Eligibility criteria applies, visit [Plumlife.co.uk](https://www.plumlife.co.uk) to find out more or email sales@plumlife.co.uk.

DISCOUNTED RENT

LOW UPFRONT COSTS

OPPORTUNITY TO BUY

HOW MUCH CAN I SAVE WITH RENT TO BUY?

With Rent to Buy, you can rent your home at an affordable discounted rate (usually up to 20% lower than average local market rents) for up to five years while you save to buy all of your apartment or a share of it in the future.

That 20% goes straight back into your savings, meaning you're building up your deposit from day one. Based on this, here's an example of how much you could save:



MARKET RATE:
£1,000 A MONTH
RENT TO BUY:
£800 A MONTH
SAVING:
£200 A MONTH



TOTAL SAVED AFTER FIVE YEARS:

£12,000

(PLUS ANY INTEREST YOU'VE MADE)

This £12,000 could then be used as a deposit to purchase your apartment

WHO IS ELIGIBLE?

CERTAIN KEY ELIGIBILITY CRITERIA APPLY TO RENT TO BUY, APPLICANTS MUST:

- ♦ Be first-time buyers, unless they are returning to the market following a personal incident such as a relationship breakdown which has meant the applicant has needed to leave their home.
- ♦ Be working, and intending to buy their own home in the future.
- ♦ Be unable to purchase right now via the open market.
- ♦ Be able to pay a rental deposit equivalent to a month's rent.
- ♦ Have a household income of less than £80,000 per year



IN SAFE HANDS

**PLUMLIFE IS A PROFIT FOR PURPOSE COMPANY,
COMMITTED TO CREATING GREAT HOMES AND
GROWING SUCCESSFUL, VIBRANT COMMUNITIES.**

We've been helping first-time buyers with affordable home ownership for more than 25 years. Our 'People. Places. Purpose.' Strapline isn't just there for show - building and supporting great communities is at the heart of what we do.

We're part of Manchester based Great Places Housing Group, our multi-award winning teams specialise in offering first-time buyers affordable homeownership solutions, via options including Rent to Buy.

We're known for innovative and exciting developments designed to meet the lifestyles and aspirations of our customers.

Our Plumlife Management team manage over 7,500 leasehold, shared ownership and rented properties across the North West, providing high-quality facilities management and lettings services. So you can feel safe, knowing you're in experienced hands.



PEOPLE. PLACES. PURPOSE.

W

O

W

ST

FOR ENQUIRIES

PLEASE GET IN TOUCH

0161 447 5050

RENT@PLUMLIFE.CO.UK



Disclaimer

The details in this brochure are subject to change and do not constitute part of a contract. Prospective customers must satisfy themselves by inspection or otherwise as to the accuracy of information given in the brochure. Images are provided for illustration purposes only and may differ to the homes and shared spaces available; please ask a lettings advisor for more information.