



2B-06

TWO BEDROOM APARTMENT WITH BALCONY

APARTMENTS

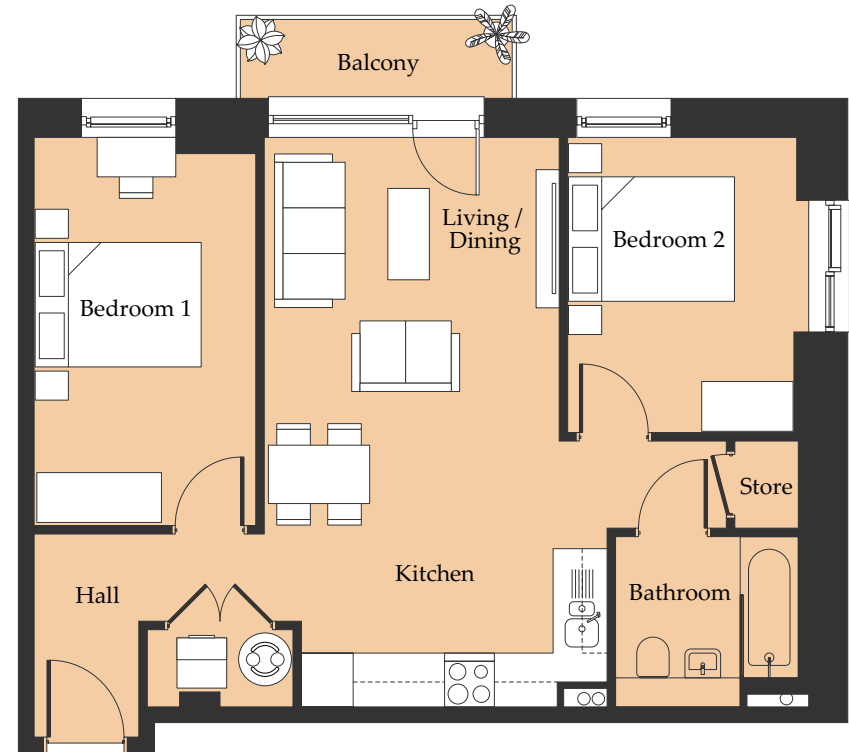
LEVEL	PLOTS
02	206
03	306
04	406
05	506

63 SQM 678.1 SQ FT

ROOM TYPE	SIZE (M)	SIZE (FT)
Kitchen / Living / Dining	6.9 x 3.5	22' 6" x 11' 4"
Master Bedroom	4.7 x 2.7	15' 4" x 8' 8"
Second Bedroom	3.5 x 2.7	11' 4" x 8' 8"
Bathroom	2.2 x 2.0	7' 2" x 6' 5"
Balcony	3.4 x 1.0	11' 1" x 3' 2"

PLEASE GET IN TOUCH

0161 447 5050 RENT@PLUMLIFE.CO.UK



Disclaimer:

The details on this insert are subject to change and do not constitute part of a contract. Dimensions are for guidance only and prospective customers must satisfy themselves by inspection or otherwise as to the accuracy of information given. Please ask a lettings advisor for more information.