



2B-04

TWO BEDROOM APARTMENT WITH BALCONY

APARTMENTS

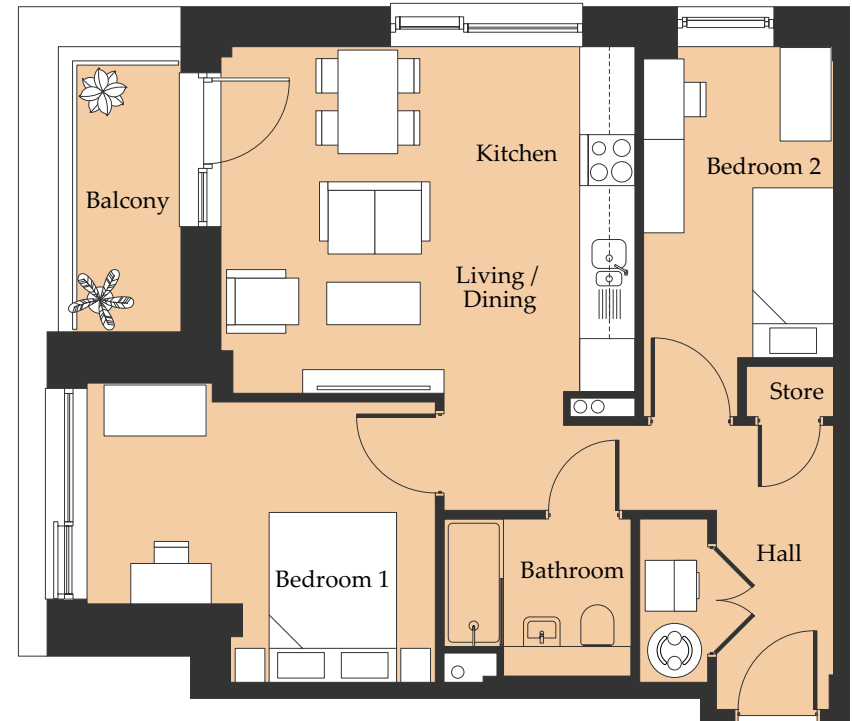
LEVEL	PLOTS
06	602

57.7 SQM 621.1 SQ FT

ROOM TYPE	SIZE (M)	SIZE (FT)
Kitchen / Living / Dining	4.8 x 4.0	15' 7" x 13' 1"
Master Bedroom	3.3 x 4.1	10' 8" x 13' 4"
Second Bedroom	4.3 x 2.2	14' 1" x 7' 2"
Bathroom	2.2 x 1.8	7' 2" x 5' 9"
Balcony	3.3 x 1.4	10' 8" x 4' 5"

PLEASE GET IN TOUCH

0161 447 5050 RENT@PLUMLIFE.CO.UK



Disclaimer:

The details on this insert are subject to change and do not constitute part of a contract. Dimensions are for guidance only and prospective customers must satisfy themselves by inspection or otherwise as to the accuracy of information given. Please ask a lettings advisor for more information.